

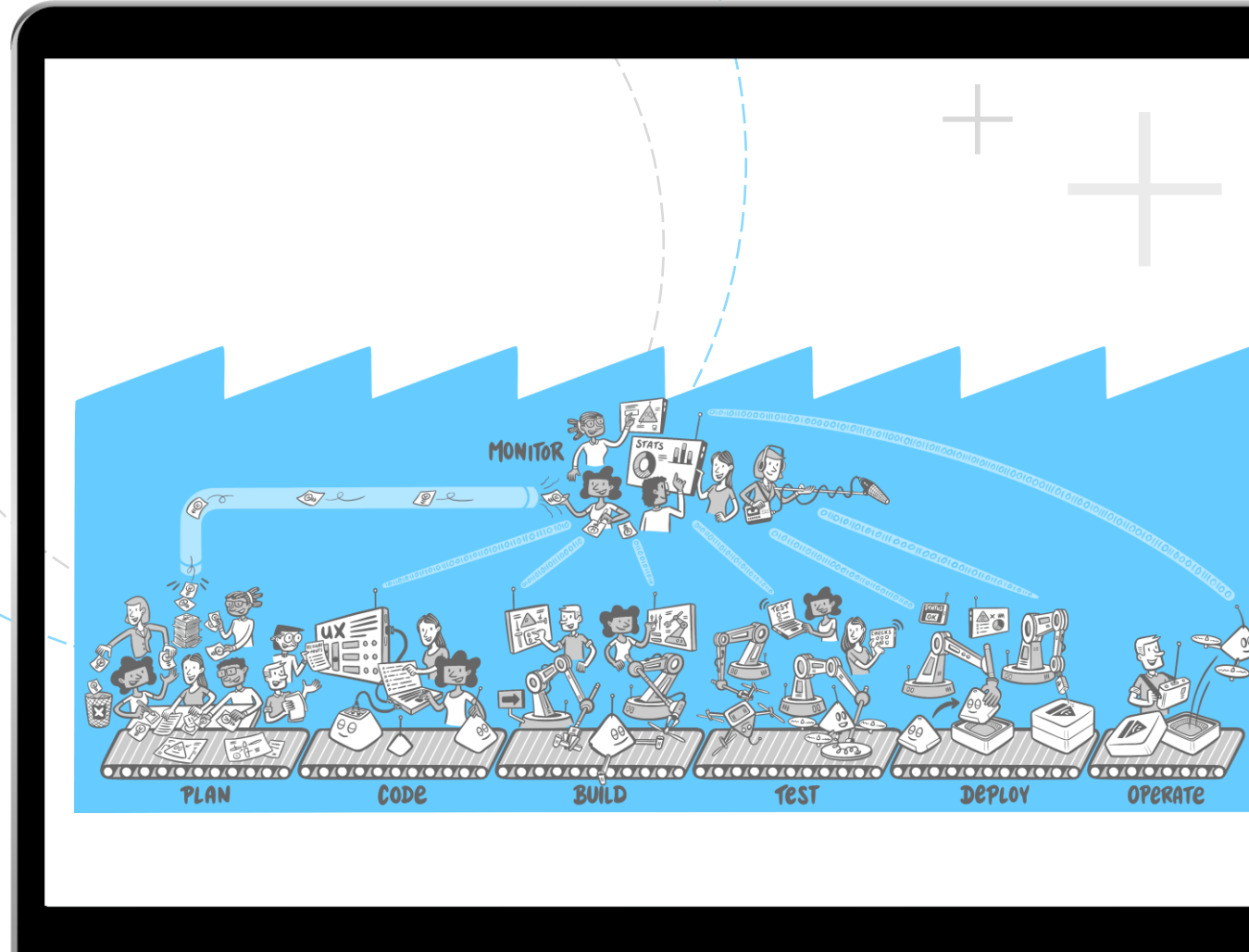


zühlke
empowering ideas

Digital Factory

Digital Factory

Helps large-scale digital delivery organizations reduce lead times, unblock inefficiencies, and **improve ROI** through a hands-on, lean **transformation** approach. Our expert team delivers rapid cross-area assessment and a pragmatic roadmap for change, providing **real outcomes** and improvements in an **incremental** and **collaborative** way.



Why Digital Factory?

Industrialize your software development

As more and more companies adopt digital technologies, the demand for digital products and services is growing rapidly. This means that organizations need to be able to deliver high-quality digital products at scale, in a fast and efficient manner, in order to remain competitive.



Time to market: By reducing lead times and unblocking issues, Zühlke helps organizations accelerate the delivery of their digital products and services, enabling them to get to market faster.



Improved quality: Zühlke's hands-on support and lean transformation approach helps organizations improve the quality of their digital products and services, resulting in better customer experiences and higher levels of customer satisfaction.



Improved ROI: By providing visibility into the ROI of digital investments, Zühlke helps organizations make more informed decisions about where to allocate resources and focus their efforts, resulting in better returns on investment.



Increased agility: Zühlke's Digital Factory consulting offering helps organizations become more agile, enabling them to respond quickly to changes in the market or customer needs.



Empowered teams: Zühlke's lean transformation approach and collaborative culture empowers teams to take ownership of the digital products and services they deliver, resulting in greater engagement and a more innovative and creative culture.

Why Zühlke?

Zühlke is the ideal partner for your transformation



We have a strong **partner network** that ensures we can provide comprehensive solutions to all our customers.

We have **extensive knowledge** in various **industries**, allowing us to deliver industry-specific solutions.

Zühlke is a **trusted company** that you can rely on to provide the highest quality services and solutions.

We are **investing significantly** in our Digital at-scale / Digital Factory to ensure it continues to evolve and meet our customers' needs.

We have a vast library of **reusable assets** that allows us to transform your company faster and more efficiently.

We are committed to **continuously improving** our services and solutions to deliver the **highest value** to our customers.

What is our approach?

Optional subtitle of the slide



Transformation: Our approach is lean and **outcome-oriented**, with a focus on **collaboration, empathy, and expertise**. We combine our rapid cross-area assessment with **hands-on support** and **mentoring** to deliver a targeted **roadmap** for change and produce observable improvement in the **efficiency** and **effectiveness** of an organization's digital products and services. We also use **engineering as a key enabler**, and our approach is grounded in a deep understanding of the interplay between **product, technology, and organizational** model.



Individual Journey: But what really sets us apart is our **customer-centric approach**. We understand that every customer is **unique**, with their own set of **needs and requirements**. That's why we **work closely** with each customer so that they can shape, and we can help them on their **individual journey**. We **listen** to your needs and requirements, and we work together in **sprints** to develop a solution that meets those needs.



DevSecOps: By combining our expertise in **software engineering, security, and operations**, we help organizations build a culture of **security** that enables them to innovate with confidence and deliver products that meet the **highest** standards of **quality** and **reliability**. Our approach emphasizes **automation, collaboration, and continuous improvement**, and is tailored to meet the unique needs of each organization we work with. We help you deliver software products **faster and more securely**, by **integrating security** into every stage of the software development lifecycle.

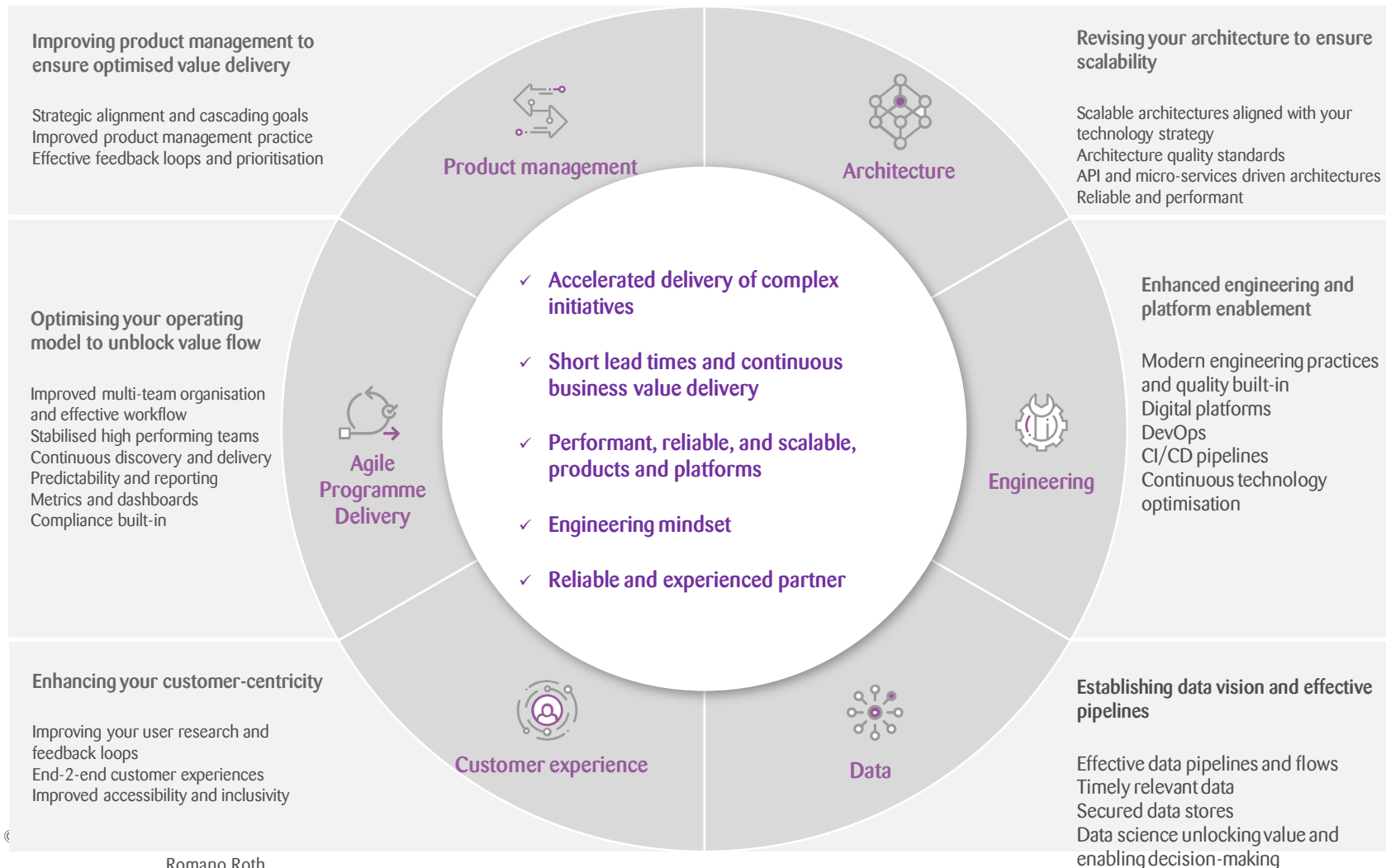
Our approach is different

Our approach differs from other approaches by providing a lean and pragmatic transformation framework that focuses on the rapid identification of root causes and hands-on support for implementing actionable improvements across engineering, ways of working, and organizational models in a collaborative and empathetic way.

Focus	Digital Factory	Scaled Agile Framework (SAFe)	Large-Scale Scrum (LeSS)	Digital Transformation consulting	Agile Transformation consulting	Lean Transformation consulting
Key Features	Rapid cross-area assessment, lean transformation support, outside-in expert view, incremental collaborative improvements	Framework for managing and coordinating work across multiple Agile teams, Program Increment (PI) planning, Agile Release Trains (ARTs), continuous delivery pipeline	Simplification and transparency, coordination and collaboration across multiple Scrum teams, product-focused approach	Assessment of people, processes, and technology, long-term sustainable change, organization-wide buy-in	Training, coaching, and mentoring on Agile practices, supporting tools and processes, team and individual performance metrics	Systematic approach to process improvement, elimination of waste and inefficiencies, data analytics and other tools to identify areas for improvement
Benefits	Improved speed and quality of digital delivery, reduced lead times and blockages, better ROI	Improved alignment and coordination across teams, faster delivery of value, improved quality and predictability	Faster time-to-market, improved product quality, increased customer satisfaction	Improved business agility, greater innovation, increased competitiveness	Improved team collaboration and communication, faster delivery of value, increased stakeholder satisfaction	Reduced costs and lead times, improved productivity and quality, increased customer satisfaction
Disadvantages	May require significant organizational change and buy-in from stakeholders, may not be suitable for all types of organizations or projects	May be too prescriptive for some organizations, may require significant investment in training and infrastructure	May require significant cultural change and buy-in from stakeholders, may not be suitable for all types of organizations or projects	May require significant investment in time and resources, may not be suitable for all types of organizations or projects	May not address deeper cultural or organizational issues, may require significant investment in training and coaching	May not be suitable for all types of organizations or projects, may require significant investment in data analytics and other supporting tools

Delivering complex initiatives at pace requires a wholistic approach

Our multi-dimensional approach helps achieve short lead times while ensuring quality, scalability, and compliance



Right foundations to ensure real outcomes: speed to market, better ROI

- ✓ Innovation - great value propositions delivered to the market quickly using digital channels
- ✓ Ability to pivot and adapt to changing market needs
- ✓ Early ROI and cost savings
- ✓ Market fit - great customer experiences helping to attract and retain customers
- ✓ Stable, performant, quality products
- ✓ Predictability

Approach to change initiative – lean transformation

Using continuous incremental transformation approach to improve operating model without disruption and accelerate time to market

